

TECHNICAL DATASHEET



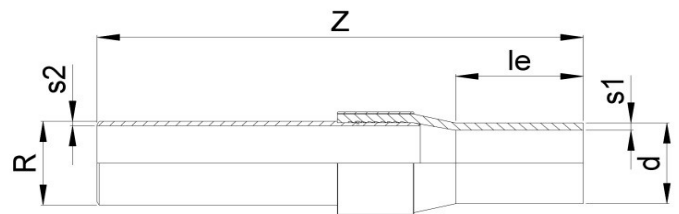
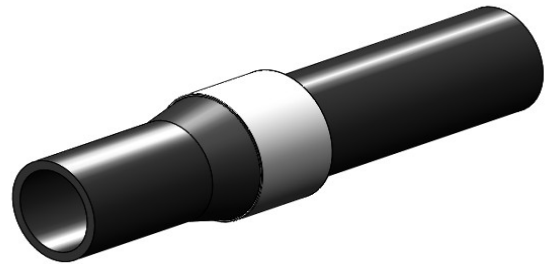
TRANSITION ADAPTOR PE-STEEL

01 Update - 12/2024

TECHNICAL DATA

Article No	001 117 6180 0200
d (mm)	200
R (inch)	8"
le (mm)	112
Z (mm)	675
s1 (mm)	18,2
s2 (mm)	8,2
Weight (Kg)	44,51
Box Quantity (pcs)	1
Box Dimension (pcs)	

INJECTION MOULDED



IDENTIFICATION OF PRODUCT

D	200x8
SDR	11
RAW METARIAL	PE 100
PRESSURE CLASS	16 Bar Water 10 Bar Gas
TRADEMARK	NTG
EXECUTION	Injection Moulded
STANDARD	TS ISO 17885

SPECIFICATION

Long Spigot
Welding end
Steel pipe GR-B API 5L
PE part injected

Tolerance on diameters and thickness according to the standards. The other dimensions are specialized. Tolerance $\pm 5\%$. NTG PLASTIK reserves all the right to change any information without giving prior notice. The production, distribution and utilization of this document without explicit authorization is prohibited.

Fr 161 Rev 00